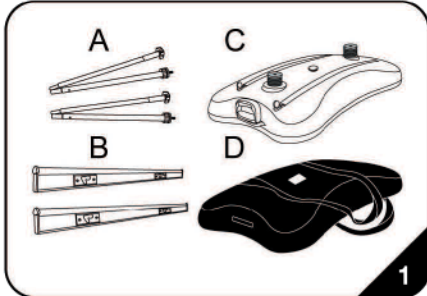
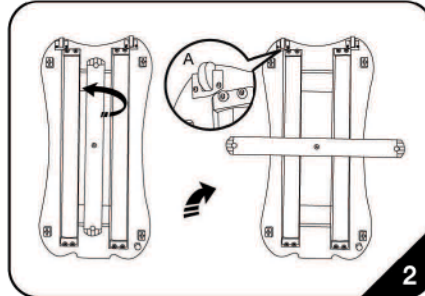


# IMPACT TORNADO BANNER STAND - Set Up Instructions

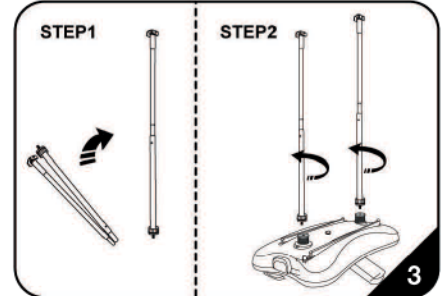
Modern appearance, stable quality, practicability & multiformity  
Package available as accessories



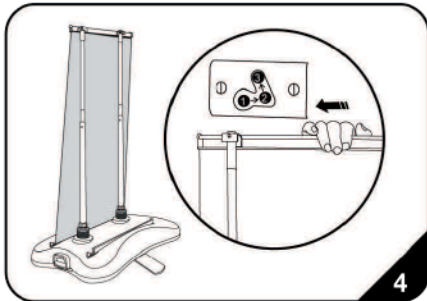
1. A. Telescopic pole 2pcs    B. Upper graphic clip 2pcs  
C. Water base assembly 1pc    D. Nylon bag 1pc



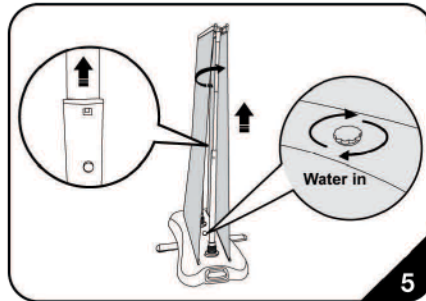
2. A. Trolley  
A revolving foot to strengthen stability.



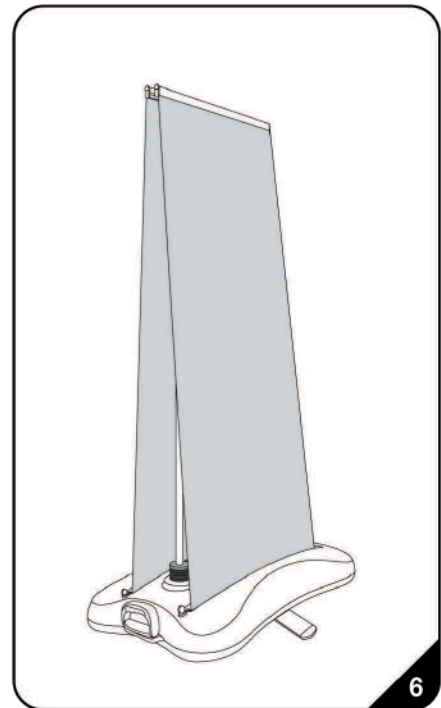
3. Unfold the pole and slip the pieces together to assemble it to a rigid pole. Attach vertical poles to the spring by screwing tightly. put warheads outward.



4. Aim two connectors in graphic clip at gourd hole in pole holder, shift to the right 7 hole, then raise till warhead out, suggest handling by two person.



5. Raise the middle pole to the highest point, The graphic can be tightened by adjusting the pole. Then inject water to water base.



6. Complete installation.



**CAUTION:**  
PLEASE READ THE INSTRUCTIONS BEFORE INSTALLING PRODUCTS

Our products keep upgrading. Right to change parts reserved.